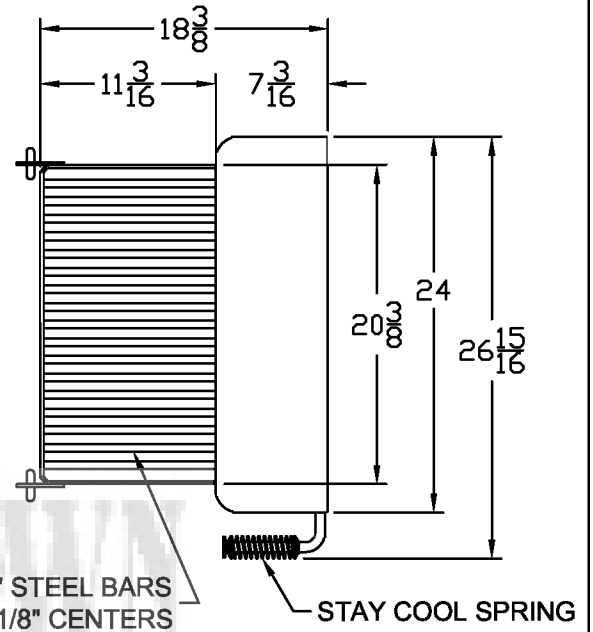
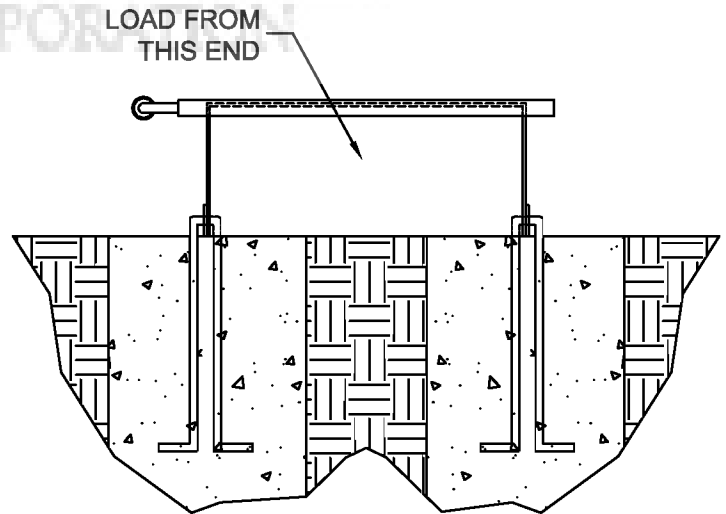
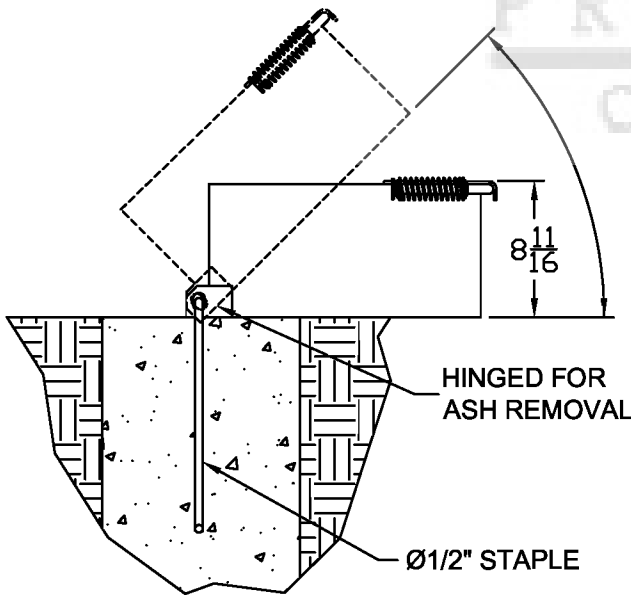


- Ground stove will be 18-3/8" x 26-15/16" x 8-11/16" high and contain a 7-3/16" x 24" hot plate. The hot plate has a 1" lip formed across the front and a cooking area of 172 sq. inches. The stove box and hot plate will be constructed of 3/16" thick steel (A569).
- Grate is constructed from 1/2" dia. A36 steel bars located on 1 1/8" centers. The non-adjustable theft proof grate has a cooking area of 220 sq. inches.
- Total cooking surface will be 392 sq. inches.
- Grate handle is constructed of a 5/8" dia. A36 steel bar with stay cool spring grips suitable for public use.
- Stove is mounted using two 1/2" dia. A36 steel staples embedded in concrete that allow the stove to tilt back for ease of cleaning.
- All joints are continuously welded.
- All exposed corners are chamfered for safety.
- Standard finish is a non-toxic black powder coat.



JAMESTOWN  
ADVANCED  
PRODUCTS  
CORPORATION



NOTE : CUSTOMER TO PROVIDE CONCRETE ( RECOMMENDED )

CUSTOMER APPROVAL :

DATE :

**JAMESTOWN**  
ADVANCED  
PRODUCTS  
CORPORATION

THIS DRAWING, WHICH CONTAINS PROPRIETARY INFORMATION, IS THE PROPERTY OF JAMESTOWN ADVANCED PRODUCTS CORPORATION. IT SHALL NOT BE REPRODUCED IN ANY MANNER NOR DISCLOSED TO THIRD PARTIES WITHOUT WRITTEN PERMISSION OF JAMESTOWN ADVANCED PRODUCTS CORPORATION.

DATE : 09-08-06

PRODUCT PART NUMBER : 12748

REV. NO.

PRODUCT DESCRIPTION :  
GROUND STOVE WITH STAPLE ANCHORS  
18-3/8" x 26-15/16" x 8-11/16" HIGH

2855 GIRTS ROAD  
JAMESTOWN, NY 14701

PHONE 800-452-0639 -- FAX 716-483-5398 -- WWW.JAMESTOWNADVANCED.COM