

Watch Tutorial

	SEAT BOARD	TABLE TOP BOARD	CROSS BRACE	HANDICAPPED CROSS BRACE	3/8-16 X 2 1/4"LG. CARRIAGE BOLT	3/8-16 X 1"LG. CARRIAGE BOLT	3/8-16 NUT	3/8 SPLIT RING WASHER
STD. 4', 6' & 8' TABLE	2	3	2	0	23	4	27	27
STD. 10' & 12' TABLE	2	3	4	0	36	8	44	44
STD. 8' & 10' HC TABLE	2	3	2	1	26	6	32	32
STD. 12' HC TABLE	2	3	4	1	39	10	49	49

Step 1: If using wood provided by others, refer to pages 3 and 4 for hole drilling patterns. If using wood provided by Jamestown, begin by separating the seat boards (2 req'd) from the table top boards (3 req'd) (refer to pages 3 and 4). Place the 3/8"-16 x 2 1/4" carriage bolts through the pre-drilled table top boards. Place boards and bolts with the table top facing the ground (refer to figure 1).
Helpful hint: Use tape on the head of the bolt to hold it in place while setting the boards into the proper position.

Step 2: Place the frame uprights over the carriage bolts (refer to figure 2). Secure finger tight using one 3/8" lockwasher and one 3/8" nut per bolt. Repeat this step for each upright required (2 uprights for 6' & 8', 3 uprights for 10' & 12' tables). On the uprights located at the ends of the table, the flange should be placed towards the end of the table boards (refer to figure 2). On the 10' & 12' tables, the center upright may be placed with the flange facing either end.

Step 3: Place the center bracket, shown in figure 3, over the carriage bolts located at the center of the table. If handicap accessible is required, place the handicapped bracket over the carriage bolts located at the end of the table (refer to figure 4). Place two 3/8"-16 x 1" carriage bolts through the outside of the rectangular slots of the center bracket as shown in figure 3. For a handicapped accessible table, place one 3/8"-16 x 1" carriage bolt through the rectangular slot of the handicapped bracket as shown in figure 4. Secure the center and/or handicapped bracket finger tight using one 3/8" lockwasher and one 3/8" nut per bolt.



FIGURE 4



FIGURE 1



FIGURE 2



FIGURE 3

PLEASE NOTE:
If you purchased lumber from Jamestown, the lumber is not designed to be stored for long periods unassembled. If you need to store your product from more than one month from time of receiving your shipment, it is best practice to store your product completely assembled. If the lumber is not assembled, it may dry out, warp, and become difficult to assemble over time. Jamestown is not responsible for replacing lumber that has been stored for long periods of time prior to assembly.

Step 4: Attach the cross brace to the bolt in the center bracket using one 3/8" lockwasher, and one 3/8" nut (refer to figure 3). Attach the other end of the cross brace using one 3/8"-16 x 1" carriage bolt, one 3/8" lockwasher, and one 3/8" nut to the frame angle as shown in figure 5. Repeat this step for each cross brace required. Attach the handicapped cross brace in a similar fashion as shown in figures 6 & 7.

Note: The 10' & 12' tables have one cross brace that is shorter than the rest. The cross brace that has a bent flange on one end is used on the 12' Table (figure 8), and the cross brace bent on both ends is used on the 10' Table. This cross brace needs to be attached to an inner frame upright as shown in figure 8. A 10' Table would have a cross brace, in the same location, with a bent flange on both ends.

Step 5: Attach the two seat boards to the frame uprights seat bracket. Align the seat board pre-drilled holes to the holes in the seat bracket. Attach using four 3/8"-16 x 2 1/4" carriage bolts, four 3/8" lock washers, and four 3/8" nuts per seat board (refer to figure 9).

Step 6: Tighten all hardware. Tighten the nut until the bolt head starts to compress into the board. We recommend a 9/16" socket. **Warning:** Do not over tighten the carriage bolts. Over tightening may cause the wood to splinter and/or split.

Step 7: Turn table upright. **Warning: THE JAMESTOWN TABLES ARE VERY HEAVY. TURNING THE TABLE OVER IN AN UNSAFE MANNER, MAY CAUSE INJURY. EXERCISE EXTREME CAUTION WHEN TURNING OVER.**

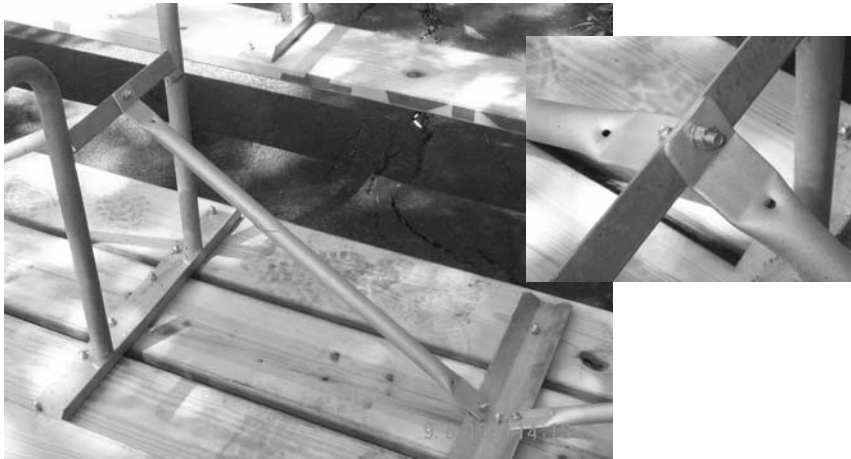


FIGURE 8



FIGURE 9



FIGURE 5



FIGURE 6



FIGURE 7

